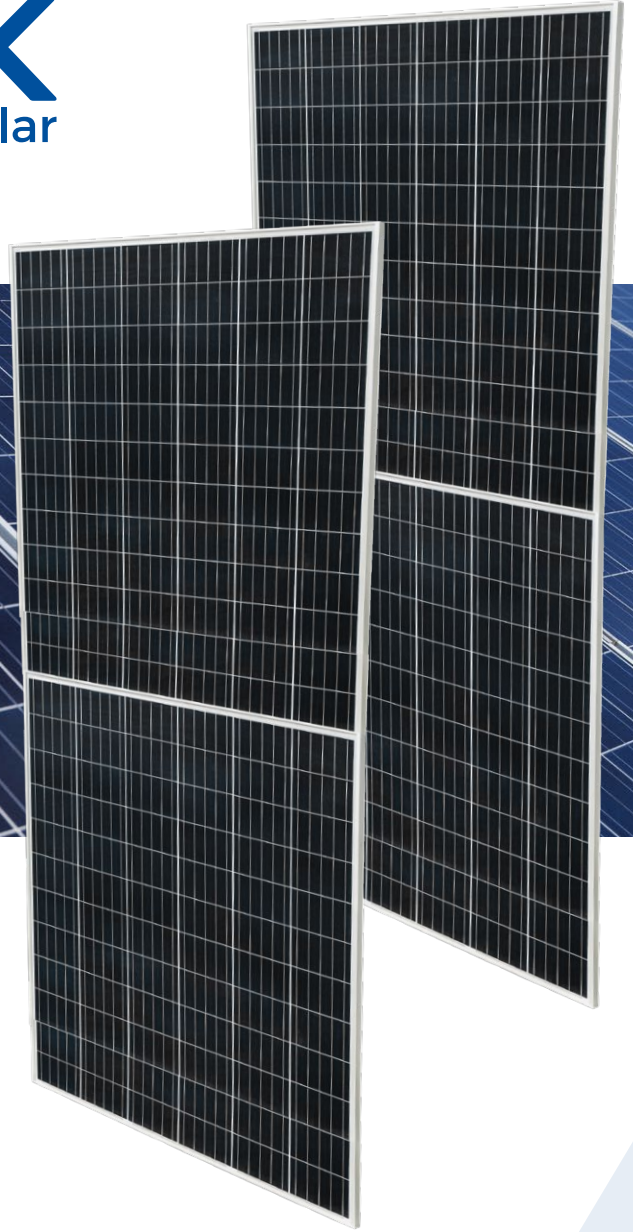
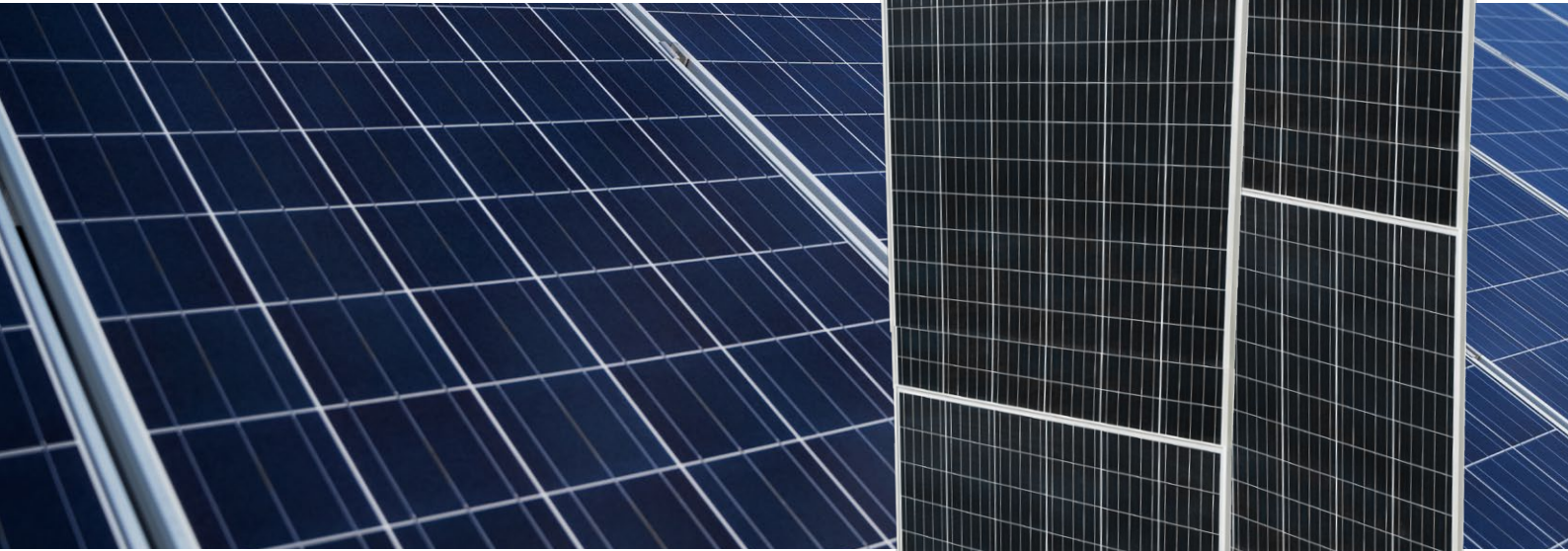


ACRO-72HC



Low light Performance

Advanced glass and surface texturing allow for excellent performance un low light environments.



MBB Half-Cut Solar Cell:

144 cells (6X24); 10/11 busbar solar cell.



Withstand strong snow load 5400 Pa
Wind load 2400 Pa



Higher Module Conversion Efficiency

Higher module output up to 550W with module efficiency up to 21,5%



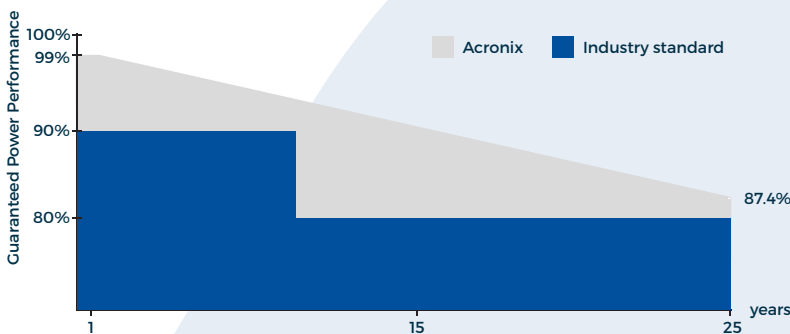
Higher Power Output

Module power increases 5-25% generally, bringing significantly lower LCOE and higher IRR.

25
Years linear
power
warranty

12
Years product
warranty

+
Watts positive
tolerance



LINEAR PERFORMANCE WARRANTY

12 Year Product Warranty

25 Year Linear Power Warranty

0.40% Annual Degradation Over 25 years



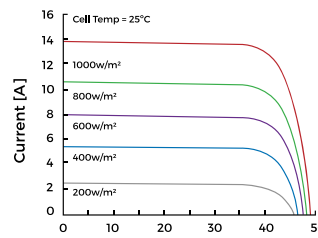
Electrical Performance (NOCT)

Module type: ACRO-72HC	525M	530M	535M	540M	545M	550M
Maximum Power (Wp)	397W	400.5W	404.5W	408.5W	412W	416W
Open circuit Current (Voc)	46.05V	46.20V	46.35V	46.50V	46.65V	46.8V
Short circuit Current (Isc)	10.85A	10.90A	10.95A	11.00A	11.07A	11.11A
Maximum Power Voltage (Vm)	38.90V	39.05V	39.20V	39.35V	39.50V	39.65V
Maximum Power Current (Im)	10.20A	10.26A	10.32A	10.38A	10.43A	10.51A

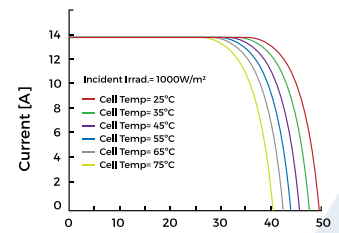
Electrical Performance

Module type: ACRO-72HC	525M	530M	535M	540M	545M	550M
Maximum Power (Wp)	525W	530W	535W	540W	545W	550W
Open circuit Current (Voc)	49.05V	49.20V	49.35V	49.50V	49.65V	49.80V
Short circuit (Isc)	13.65A	13.71A	13.78A	13.85A	13.92A	13.98A
Maximum Power Voltage (Vm)	41.20V	41.35V	41.50V	41.65V	41.80V	41.95V
Maximum Power Current (Im)	12.75A	12.82A	12.90A	12.97A	13.04A	13.12A
Module efficiency	20.3%	20.5%	20.7%	20.9%	21.1%	21.3%
Maximum Series Fuse	25A					
Watts positive tolerance	0~+3%					
Number of Diode	3					
Standard Test Conditions	1000W/M ² , 25°C, AM1.5					
Maximum System Voltage	1500V/DC					
Temperature-Coefficient Ioc	+0.048%/°C					
Temperature-Coefficient Voc	-0.270%/°C					
Temperature-Coefficient Pmpp	-0.350%/°C					
Operating Temperature	-40°C...+85°C					
Normal Operating Cell Temperature	45±2°C					

Current-Voltage Curves



Module characteristics at constant module temperatures of 25°C and variable levels of irradiance



Module characteristics at variable module temperatures and constant module irradiance of 1.000W/m²

Mechanical Characteristics

Cell (quantity/Material/Dimensions)	144(6x24) / monocrystalline silicon, mono perc
Junction box (protection degree)	>IP68
Cables & plug connectors	4MM ² , 300mm in length can be customized
Module dimensions (L / W / H)	2279x1134x35mm
Module Weight	27.2kg
Application class	Class A
Electrical protection class	Class II
Fire safety class	ClassC

Packing

Container Size	40HQ
Units/Pallet (PCS)	31
Weight/Pallet (KG)	858
Pallet Measurement (mm)	2285x1130x1260
Units/Container (PSC)	620

Mechanical diagram

